



Corporate Overview  
2015

# Disclaimer

This Presentation ("The Presentation") has been prepared by Selekture Energy Resources Ltd and/or its affiliates ("Selekture") for the exclusive use of the party to whom Selekture delivers this presentation (together with its subsidiaries and affiliates, the "Reader") using information constructed internally.

This presentation has been prepared solely for informational purposes and is not to be construed as a solicitation or an offer to buy or sell any securities or related financial instruments. The Reader should not construe the contents of this presentation as legal, tax, accounting or investment advice or a recommendation. The Reader should consult its own counsel, tax and financial advisors as to legal and related matters concerning any transaction described herein. This presentation does not purport to be all-inclusive or to contain all of the information that the Reader may require. No investment, divestment or other financial decisions or actions should be based solely on the information in this presentation.

This presentation has been prepared on a confidential basis solely for the use and benefit of the Reader; provided that the Reader and any of its employees, representatives, or other agents may disclose to any and all persons, without limitation of any kind, the tax treatment and tax structure of the transaction and all materials of any kind (including opinions or other tax analyses) that are provided to the Reader relating to such tax treatment and tax structure. Distribution of this presentation to any person other than the Reader and those persons retained to advise the Reader, who agree to maintain the confidentiality of this material and be bound by the limitations outlined herein, is unauthorized. This material must not be copied, reproduced, distributed or passed to others at any time, in whole or in part, without the prior written consent of Selekture.

Neither this presentation nor any copy of it may be taken or transmitted into the United States, its territories or possessions or distributed, directly or indirectly, in the United States, its territories or possessions save to persons reasonably believed to be qualified institutional buyers (as defined in Rule 144A under the Securities Act) or to "Accredited investors (as defined in Rule 501(a)1, (2), (3) or (7) under the Securities Act) that are institutions. Neither this presentation nor any copy of it may be taken or transmitted outside the United States to U.S persons in Australia, Canada or Japan or to Canadian persons or any securities analyst or other person in any of those jurisdictions. Any failure to comply with this restriction may constitute a violation of United States securities law. The distribution of this presentation in other jurisdictions may be restricted by law and persons into whose possession this presentation comes should inform themselves about, and observe, any such restrictions.

© 2015 Selekture. All rights reserved. Selekture specifically prohibits the redistribution of this material and accepts no liability whatsoever for the actions of third parties in this respect.

- OVERVIEW
- OPERATIONS
- TEAM
- TRACK RECORD
- CONTACT

## Who We are

- **Selekture Energy Resources Ltd. ("SER")** is an exploration and production company focused on the emerging markets of Africa.

## Experience

- SER's Board and Management Team has technical expertise, deep roots and relationships in the African oil & gas markets which enable us to understand the business environment and mitigate local complexities.

## Strategy

- SER is looking to build a portfolio of oil and gas assets with a goal of become a leading exploration and production company, developing local capabilities and maintaining strong ethical standards.

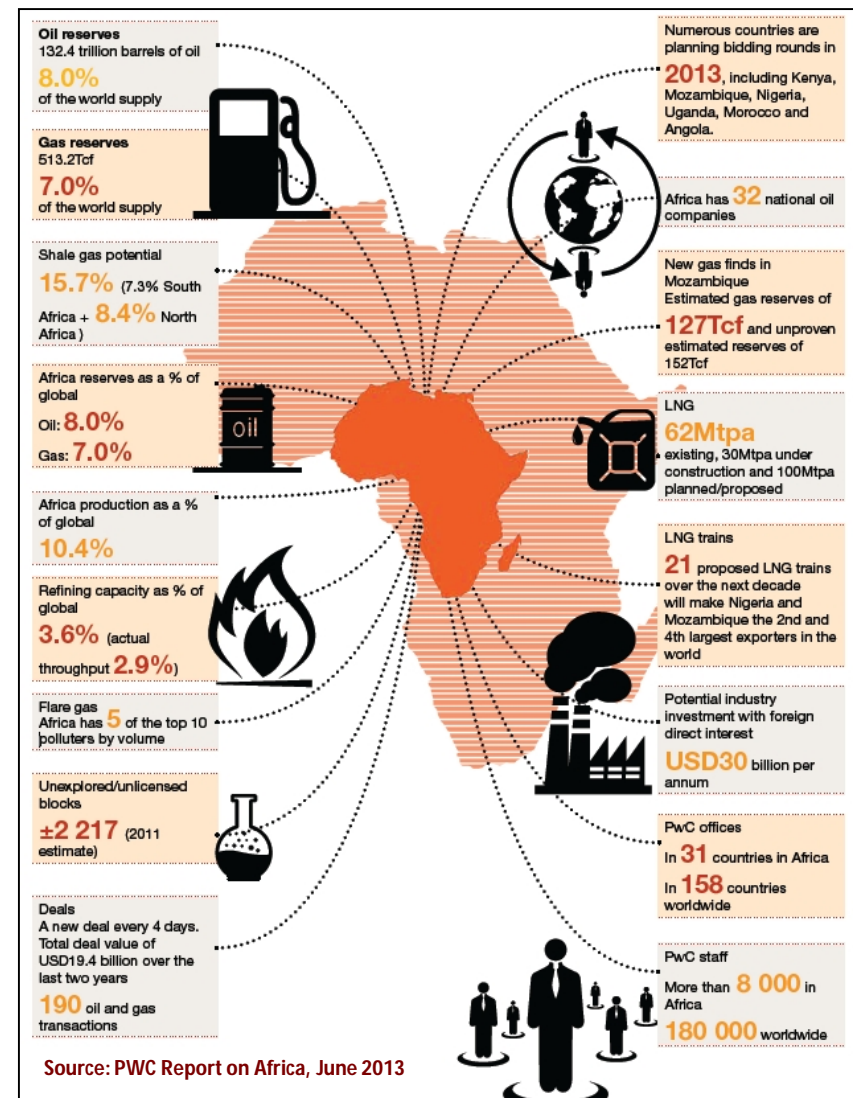
## Partnerships

- SER's Management Team has strong relationships with major oil companies such as Hess, Shell, Total, Schlumberger, Elf; as well as global banking and investor relationships.



The team at SER will use its contacts at senior levels across a large range of International and National Oil Companies, indigenous companies and small private companies or asset owners to ensure active deal flow, and form strong partnerships in Africa across the board.

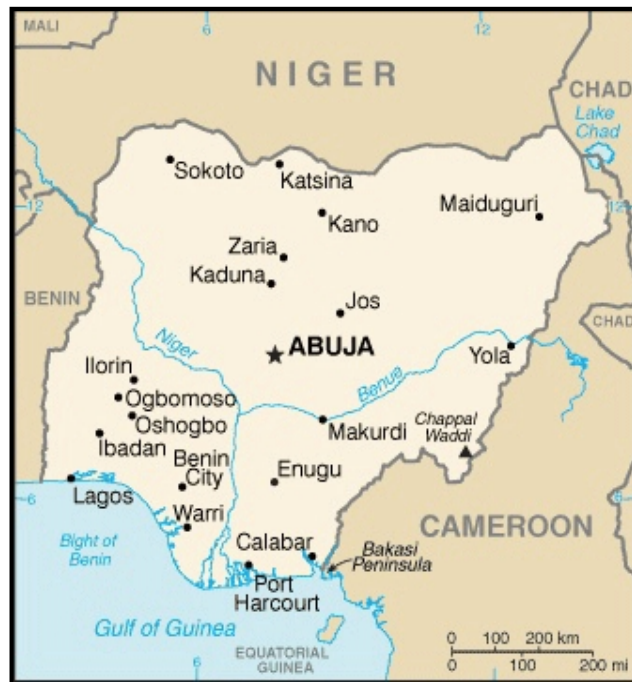
- Assets in major oil & gas areas and basins in African regions
- Assets with proven reserves and/or contingent resources
- Assets that are in appraisal or development stages.
- Assets in production or shut-in and brownfield type scenarios
- Assets that are exploration types in high oil producing areas
- Assets with operatorship or Joint Venture opportunities
- Assets with non-operating interests on a case-by-case basis



# Operations | Nigeria & Angola

SER is looking to acquire oil & gas assets in **Nigeria** that meet its strategic needs.

SER operating structure in Nigeria is via its subsidiary SER Nigeria Ltd. This qualifies it as an Indigenous Nigerian company in line with Local Content requirements.



SER is looking to acquire oil & gas assets in **Angola** that meet its strategic needs.

SER is looking to partner up with Angolan Oil & Gas asset owners that are in need of technical and financial investment.



# Team

## Board of Directors

**Joseph Oribabor**  
Chairman  
Managing Director



**Mashood Yusuf**  
Director



**Kris Oribabor**  
Director



**Mohammed Fazil**  
Director



## Operations Management



**Jean Francois Duhot**  
Director,  
Operations



**Engr. Mohammed Nasiru Aliyu**  
Manager,  
Surface Facilities Development



**Roland Mene-Ejegi**  
Manager,  
Operations



**Bruce Shapiro**  
Manager,  
Exploration



**Andrew Avwunudiogba**  
Manager,  
Geosciences



**Juliet Abbah**  
Manager,  
Engineering



## Independent Advisors



**Sam Odumodu**  
Senior Advisor,  
Exploration & Production



# Team | Board of Directors & Advisors

## **Joseph Oribabor, Chairman and Managing Director**

- 38 years experience in the upstream petroleum industry
- Senior Advisor of Petroleum Technology, SOMOIL Angola
- Worked with Shell Petroleum Company in Nigeria and the Netherlands; Production Technology, Reservoir Engineering and Asset Management
- Worked with Schlumberger Intl., holding petroleum engineering & operations management positions
- Expertise in Integrated Project Management, Integrated Field Studies, Underground Gas Storage Field Development and Training/Competency Assurance and strong track record in business development and managing multi-million dollar business teams to accomplish financial, administrative and technical objectives in Central Europe, Russian and African regions.
- University of Miskolc (Hungary), MSc, Petroleum Engineering, Active Member of SPE.

## **Mashood Yusuf, Director**

- Has 37 years of experience in petroleum industry
- Senior petroleum engineering consultant – Sonangol
- Integrated Field Development, Subsurface field Project Manager - Shell Petroleum (Nigeria)
- Holds a Master of Science in Mathematics - University of Dundee, Scotland
- Holds a Bachelor of Science in Mathematics - First Class Honours, Ahmadu Bello University, Zaria, Nigeria
- Active Member of SPE

## **Mohammed Fazil, Director**

- 18 years of investment industry experience in private equity, venture capital and growth capital investments in the oil & gas, mining and natural resources sectors, total \$300MM raised.
- Funded both public and private companies with assets in Africa, South America, Asia, Europe and Canada with a focus on natural resources and natural resource-services
- Attended University of Calgary (Canada)

## **Kris Oribabor, Director**

- 15 years experience in corporate finance, project & structured finance and risk management
- Over \$500 million in transaction experience in the financial, oil & gas, energy and technology sector
- Managing Partner of Discoverpoint Group
- Worked at Hess Oil, DVRPC, Getty Petroleum and Luk Oil Americas
- Obafemi Awolowo University (Nigeria) and Rutgers University (USA)

## **Sam Odumodu, Senior Advisor (E&P)\*\***

- Has 30 years experience in upstream oil industry
- Worked with Shell for 27 years
- At Shell he held various SPDC's management positions - Chief Petroleum Engineer, Chief Production Geologist and Job Development Adviser
- Holds a Bachelor of Science in Geology - University of Ibadan, Nigeria
- Active Member of SPE and AAPG

***\*\* Currently acting as Independent Advisors ONLY.***



# Team | Operations Management

## **Jean Francois Duhot, \*** **Director Operations**

- Has 33 years of experience in technical, operational and business management in upstream oil industry
- Africa Region Business Unit Manager – PERENCO
- General Manager – SINCOR
- Development and Operations Manager – TOTAL and EIF
- Experience in onshore and offshore drilling, appraisal, development and production operation of oil fields.
- Holds degree from ENSPM – Institut Français du Pétrole

## **Bruce Shapiro \*** **Manager Exploration**

- 33 years in the Exploration & Development sector
- Worked for Schlumberger (23 years) & Amoco as an Exploration Geophysicist & Technical Services Manager
- Successful oil & gas exploration and development projects in Africa and South East Asia, onshore & offshore
- Expert in advanced geophysical applications, pore pressure prediction and field development
- Holds Master of Science in Geology, University of Texas
- Active Member of AAPG, SEG, SPE

## **Engr. Mohammed Nasiru Aliyu \*** **Manager Surface Facilities Development**

- Managing Director/CEO of Anivbassa Engineering Limited for 27 years
- Worked with SPDC for 15 years and specialized in field engineering design and in construction of oil/gas processing facilities, pipelines, storage and crude oil evacuation terminals.
- Holds a Bachelor of Science in Mechanical Engineering - University of Wales, Swansea, UK
- Active Member of the Nigerian Society of Engineers and COREN

## **Andrew Avwunudiogba \*** **Manager Geosciences**

- Has 11 years of experience working as Geologist in various oil exploration and development projects
- Specialized in Geological Modeling and 3D Seismic Interpretation
- Senior Development Geologist for Flowgrids Limited, GB Petro Consultants, Kwanzotec Consulting
- Senior Reservoir Geologist for Schlumberger Technical Services
- Holds a Bachelor of Science in Geology, University of Nigeria, Nsukka, Active Member of SPE and AAPG.

## **Roland Mene-Ejegi \*** **Manager Operations**

- Has 36 years in upstream oil Industry, primarily with Shell in various production and operating positions
- Principal Consultant - Geotrex System Limited/ Niger Delta Petroleum Resources
- Expertise in well drilling completion, design and operations; artificial lift design & operations
- Holds a Bachelor of Science in Petroleum Engineering - University of Ibadan, Nigeria,
- Active Member of the Nigerian Society of Engineers and SPE.

## **Juliet Abbah \*** **Manager Engineering**

- Has 13 years of experience in designing, site supervising, and interface managing of various contractors on major projects
- Lead Asset Protection Engineer and Geotechnical Team Leader – Atkins Engineering, UK
- Holds a Master of Science in Geotechnical Engineering - University of Manchester, UK and a Bachelor of Science in Civil Engineering – Ahmadu Bello University, Nigeria
- Chartered Civil Engineer . Active Member of the British Institute of Civil Engineering.

**\* Currently acting as advisors/consultants. To become fulltime as and when required.**

Selekture's Team Members have a strong track record in Africa and Emerging Markets with respect to technical and project management expertise. Here is a summary of projects in which they were the leading players:

- **EA/EIA Field:**
  - Project Execution of the Offshore FPSO-based EA/EIA Field Development for SPDC, Nigeria
- **Uquo Field:**
  - Detailed design and Project Management for Uquo Oil and Gas flowlines and Condensate Delivery Pipeline from Uquo field to manifold at Exxon-Mobil Terminal, for Frontier Oil, Nigeria.
- **MENGO-KUNDJI-BINDJI Fields:**
  - Integrated reservoir study and FDP for SNPC, Congo
- **Girassol Field:**
  - Well patterns and evaluated development scenarios for Total EP, Angola.
- **Punja and Caco-Gazela Fields:**
  - The Field Development Plan for for Sonangol P&P, Angola
- **A Coalbed Methane Field:**
  - Petrel geo-modelling for a Evaluation study, for NT Energy Ltd, South Africa.
- **Offshore Sumatera - Natuna Sea Field:**
  - 3D seismic interpretation for structural targets, fault plane, seismic map attributes and lithology characterization, from well calibrated simultaneous inversion.
- **Hassi-Messaod Field:**
  - Eclipse 300 reservoir simulation models equipollent to VIP compositional for Sonatrach, Algeria
- **Haidach Gas Field:**
  - Underground Gas Storage integrated reservoir study and FDP, for RAG, Austria

# Contact

## Offices

### Registered Office (British Virgin Islands)

Selekture Energy Resources Ltd.  
2<sup>nd</sup> Floor Mill Mall Tower  
Wickhams Cay 1  
Road Town, Tortola, BVI

### Corporate Office (USA)

BNY Mellon Building  
1735 Market Street, Suite 3750  
Philadelphia, PA 19103

**Main:** +1 215 717 7877  
**Fax:** +1 866 960 9604  
**Web:** [www.selekture.com](http://www.selekture.com)



## People

### Joe Oribabor

Direct: +44 208 123 5220 (UK)  
Mobile: +244 932 226 194 (Angola)  
Mobile: +234 813 402 8993 (Nigeria)  
Email: [joe@selekture.com](mailto:joe@selekture.com)

### Kris Oribabor

Mobile: +1 856 534 6668 (USA)  
Mobile: +234 706 277 7654 (Nigeria)  
Email: [kris@selekture.com](mailto:kris@selekture.com)